

JF545

max 15500 kg

max 5450 x 1840 x 2750 mm

max 30 m with jib

max 28 m with jib

This model combines an articulated truck loader crane with a self-propelled crawler chassis. It offers a glimpse into the future of crawler cranes.



Technical Information

Dimension	L x W x H	5450 x 1840 x 2750 mm
Stab Area		6700 x 6700 mm

Crane & Options Weights		Kg
JF545		13700
/		3500
JIBL426		1200
BASKET		200

Winch		2600 kg
		36 m - Ø 6 mm
		36.5-47 m/min.

JF545	Diesel Engine	KUBOTA V3307-DI-T-E3B	55.4 kW 74 Hp
-------	---------------	-----------------------	------------------

Speed		2.5 km/h
-------	--	----------

Gradeability		30°
--------------	--	-----



Boom Length
1.0 - 16.2 m 40 sec.

Electric Power Pack
13.5 kW
400 VAC

Rotation
360° / 1.0 rpm

Max. Outrigger Load
MAX 11.250 kg

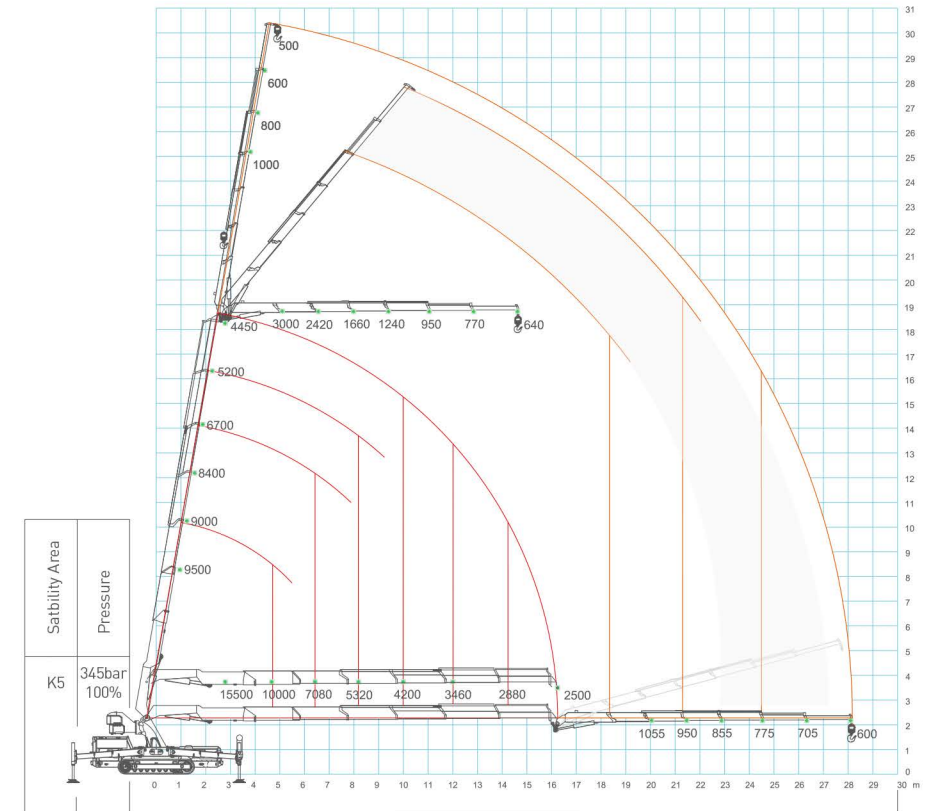
Working Angle
-15° / 80° 30 sec.

Max. Track Load
0.85 kg/cm²

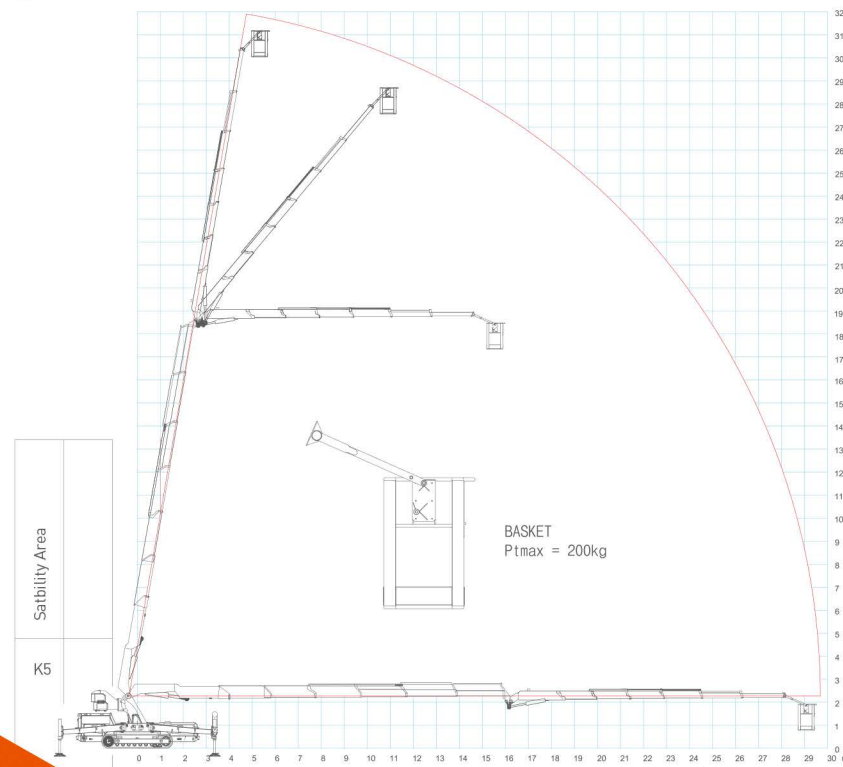
Crane Options



Load Chart



Basket Load Chart



Dimensions

